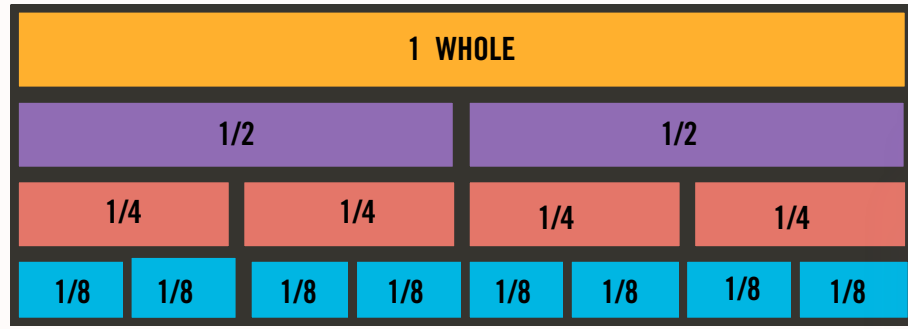


in maths, every problem has a solution!



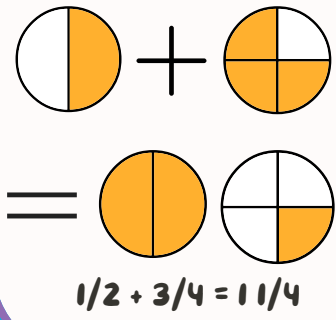
FRACTIONS



$1/4 = 1 \text{ whole divided by } 4$
 $1/4 = 25\% (100 \div 4)$
 $1/4 = 0.25$



Pizzas are best cut into sixths! One slice is $1/6$



5 goes into 100 20 times!
 $2/5 \text{ of } 100 = 2 \times 20$
 $2 \times 20 = 40$
 $2/5 = 40\%$
 $40\% = 0.4$



... AND EQUIVALENTS



istakes



llow



hinking to

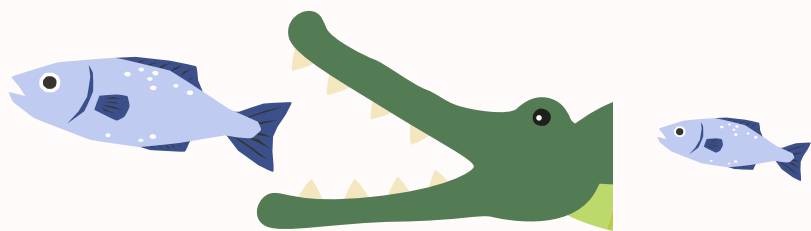


appen



T	x	0	1	2	3	4	5	6	7	8	9	10	11	12
0	0	0	0	0	0	0	0	0	0	0	0	0	0	0
1	0	1	2	3	4	5	6	7	8	9	10	11	12	13
2	0	2	4	6	8	10	12	14	16	18	20	22	24	26
3	0	3	6	9	12	15	18	21	24	27	30	33	36	39
4	0	4	8	12	16	20	24	28	32	36	40	44	48	52
5	0	5	10	15	20	25	30	35	40	45	50	55	60	65
6	0	6	12	18	24	30	36	42	48	54	60	66	72	78
7	0	7	14	21	28	35	42	49	56	63	70	77	84	91
8	0	8	16	24	32	40	48	56	64	72	80	88	96	104
9	0	9	18	27	36	45	54	63	72	81	90	99	108	117
10	0	10	20	30	40	50	60	70	80	90	100	110	120	130
11	0	11	22	33	44	55	66	77	88	99	110	121	132	143
12	0	12	24	36	48	60	72	84	96	108	120	132	144	156

Greater than and less than



The croc will always open its mouth to the biggest fish

$12 < 18$

The mouth is open to the biggest number - 18 is greater than 12

\geq Greater than or equal to. Less than or equal to \leq

π

3.14159...

Pi

This symbol is Pi

Measure all around a circle (circumference)

Measure through the middle of the circle (diameter)

Circumference \div diameter = π

No matter how big or small a circle is Pi will always be 3.14159...

If the diameter of a circle is 10, you can times 10 by Pi to work out the circumference
 $C = 10 \times 3.14159$
 $C = 31.4159$
 Try it with any number!



This symbol means infinity



PERCENTAGES % and decimals



An item is on sale for 20% off. The price was \$80. How do you work out the sale price?

Easy!
 Just multiply the price (80) by the percentage (20) and divide by 100.

$80 \times 20 = 160$
 $160 \div 100 = 1.6$
 $\$80 - \$1.6 = \$78.4$

'cent' is the Latin word for 'hundred'

A PERCENTAGE IS A NUMBER BROKEN UP INTO 100 PARTS

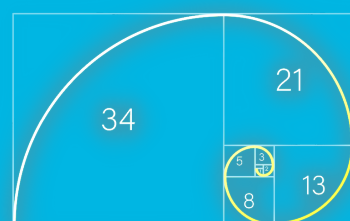
Money uses decimals to show dollars and cents like this:



The decimal point moves by tens. You can work out 10% by moving the decimal point forward one spot.

10% of \$49.99 = \$4.99
 Move the decimal point from here
 To here

= equal to
 \neq not equal to



A Fibonacci spiral is a mathematical pattern that is found in nature - from sea shells to ferns, all the way to galaxies in space, and even your ear!

SQUARE - CUBE

A number squared is a number times itself

$1^2 = 1 (1 \times 1)$
 $2^2 = 4 (2 \times 2)$
 $3^2 = 9 (3 \times 3)$
 $4^2 = 16 (4 \times 4)$
 $5^2 = 25 (5 \times 5)$
 $6^2 = 36 (6 \times 6)$

These are square numbers

A number cubed is a number times itself and then again

$1^3 = 1 (1 \times 1 \times 1)$
 $2^3 = 8 (2 \times 2 \times 2)$
 $3^3 = 27 (3 \times 3 \times 3)$
 $4^3 = 64 (4 \times 4 \times 4)$
 $5^3 = 125 (5 \times 5 \times 5)$
 $6^3 = 216 (6 \times 6 \times 6)$

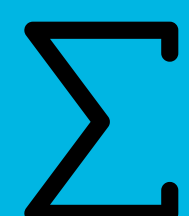
These are cubed numbers

A square root is a number multiplied by itself to make a square number, so ...

$\sqrt{25} = 5$ The square root of 25 is 5!

This is the square root sign

This symbol means 'sum of'



ARDOCH

REALISING CHILDREN'S POTENTIAL THROUGH EDUCATION

in maths, every problem has a solution!



T
I
M
E
S
X
T
A
B
L
E
S

x	0	1	2	3	4	5	6	7	8	9	10	11	12
0	0	0	0	0	0	0	0	0	0	0	0	0	0
1	0	1	2	3	4	5	6	7	8	9	10	11	12
2	0	2	4	6	8	10	12	14	16	18	20	22	24
3	0	3	6	9	12	15	18	21	24	27	30	33	36
4	0	4	8	12	16	20	24	28	32	36	40	44	48
5	0	5	10	15	20	25	30	35	40	45	50	55	60
6	0	6	12	18	24	30	36	42	48	54	60	66	72
7	0	7	14	21	28	35	42	49	56	63	70	77	84
8	0	8	16	24	32	40	48	56	64	72	80	88	96
9	0	9	18	27	36	45	54	63	72	81	90	99	108
10	0	10	20	30	40	50	60	70	80	90	100	110	120
11	0	11	22	33	44	55	66	77	88	99	110	121	132
12	0	12	24	36	48	60	72	84	96	108	120	132	144



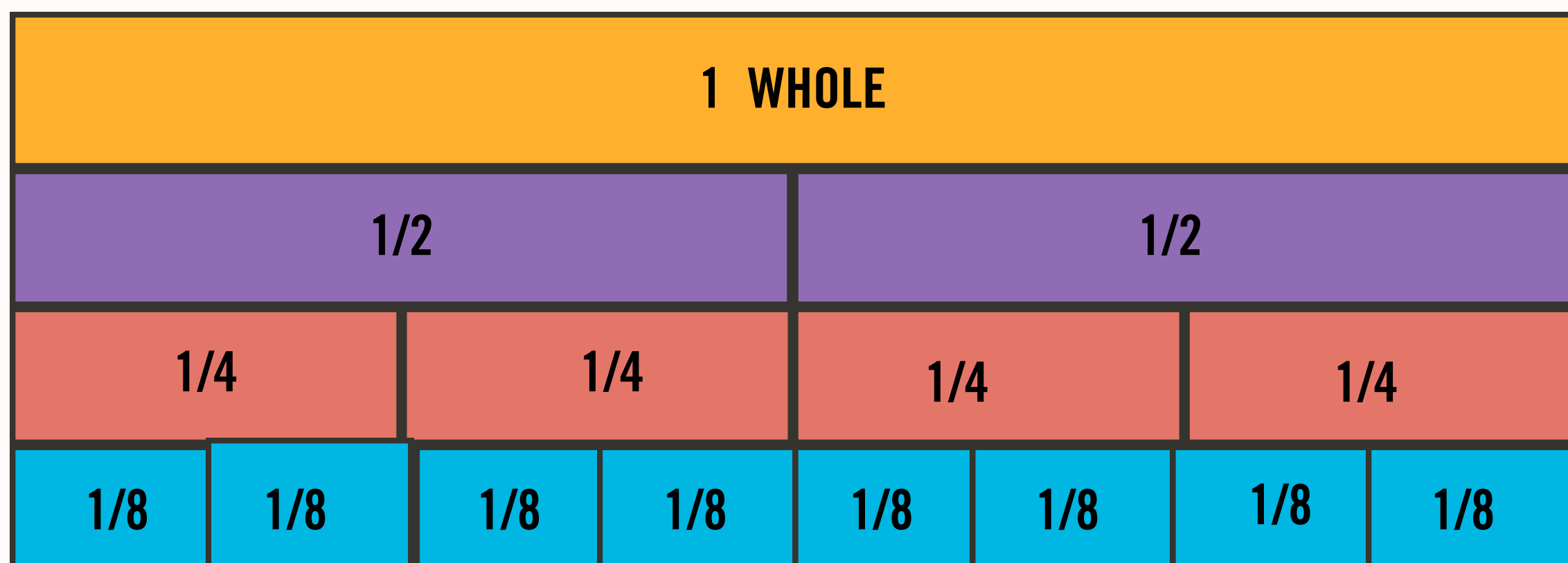
ARDOCH

REALISING CHILDREN'S POTENTIAL
THROUGH EDUCATION



in maths, every problem has a solution!

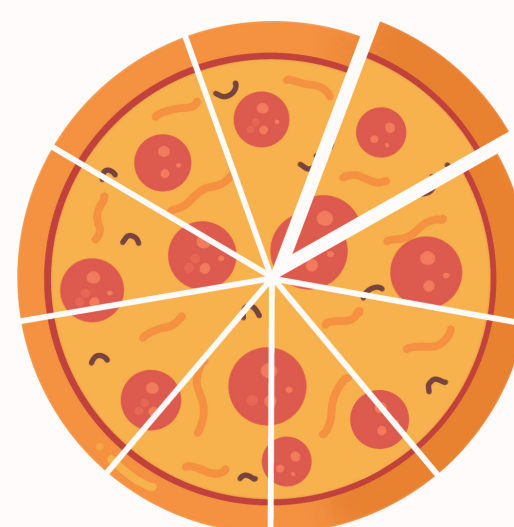
F R A C T I O N S



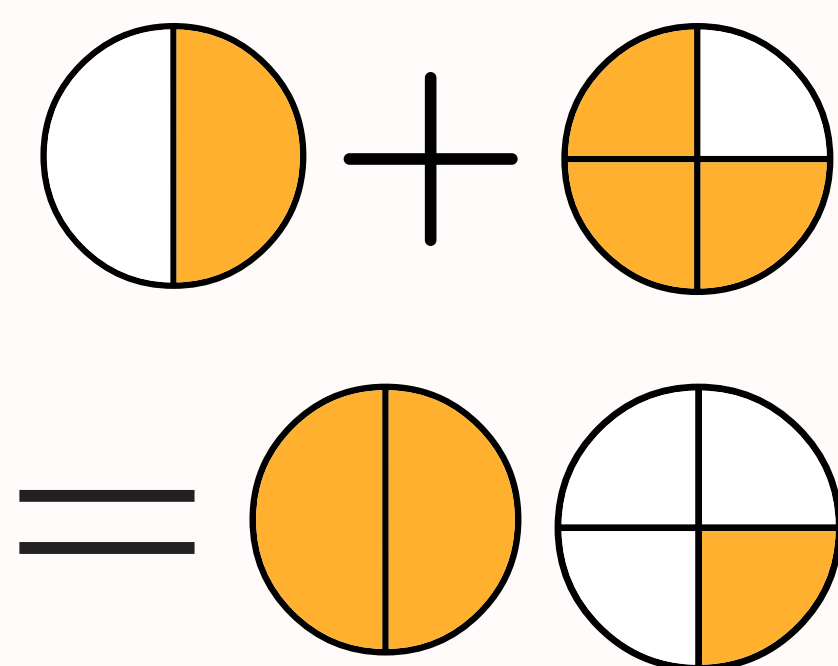
$1/4 = 1 \text{ whole divided by } 4$

$1/4 = 25\% (100 \div 4)$

$1/4 = 0.25$



Pizzas are best cut into sixths! One slice is $1/6$



$$1/2 + 3/4 = 1 1/4$$

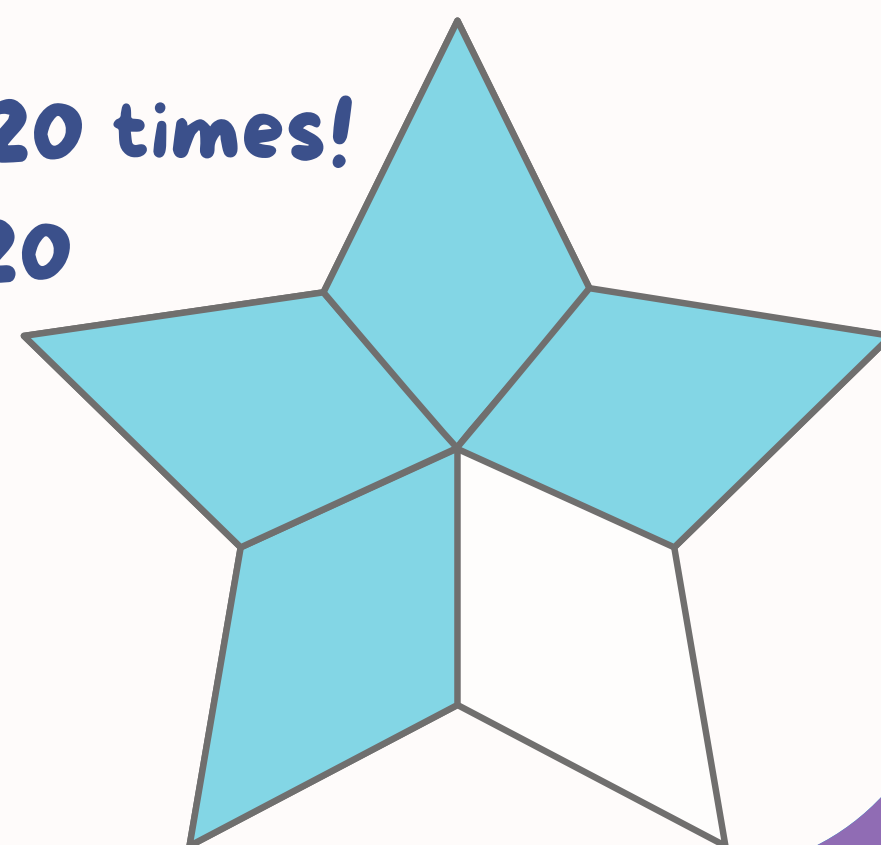
5 goes into 100 20 times!

$2/5 \text{ of } 100 = 2 \times 20$

$2 \times 20 = 40$

$2/5 = 40\%$

$40\% = 0.4$



... AND EQUIVALENTS



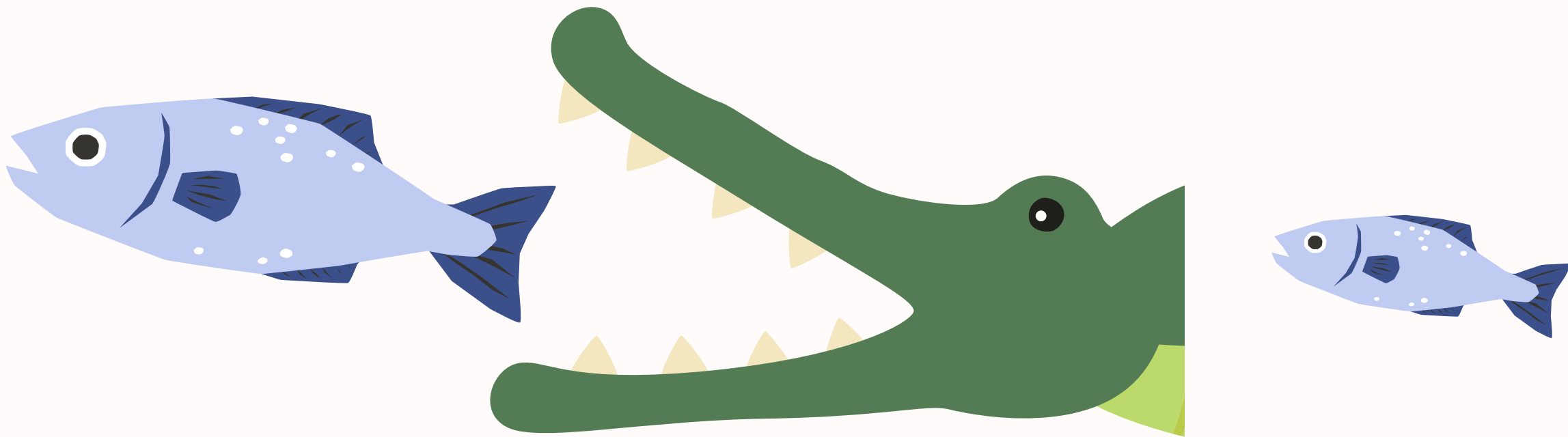
ARDOCH

REALISING CHILDREN'S POTENTIAL
THROUGH EDUCATION

in maths, every problem has a solution!



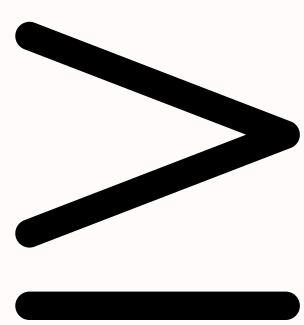
Greater than and less than



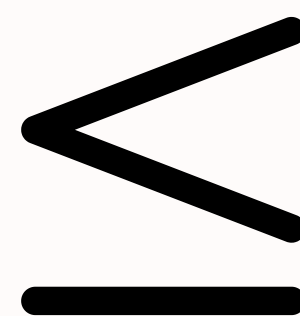
The croc will always open its mouth to the biggest fish

$$12 < 18$$

The mouth is open to the biggest number - 18 is greater than 12



Greater than or equal to. Less
than or equal to



ARDOCH

REALISING CHILDREN'S POTENTIAL
THROUGH EDUCATION



in maths, every problem has a solution!

π

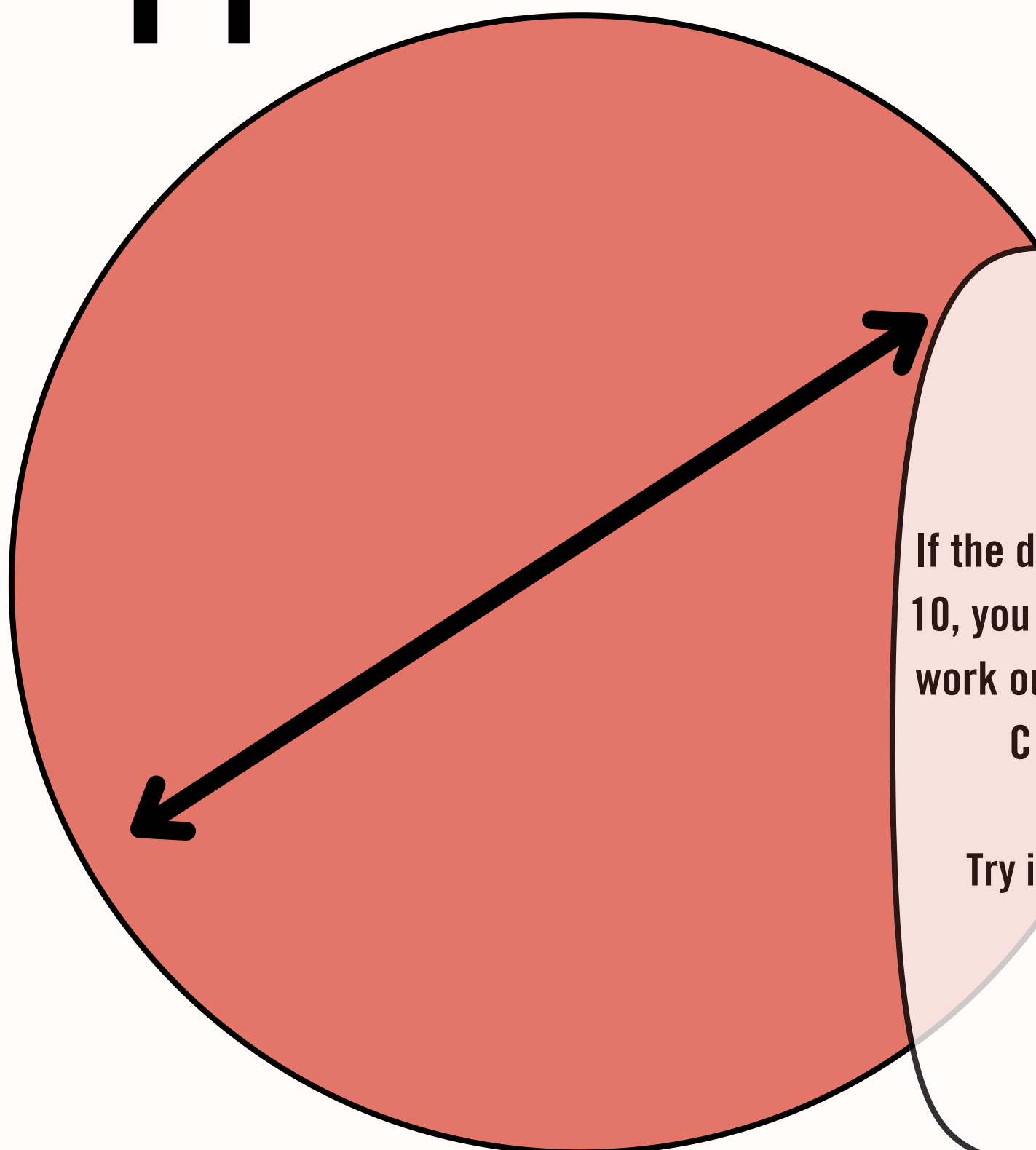
3.14159...

Pi

This symbol is Pi

Measure all around a
circle (circumference)

Measure through the
middle of the circle
(diameter)



If the diameter of a circle is
10, you can times 10 by Pi to
work out the circumference

$$C = 10 \times 3.14159$$

$$C = 31.4159$$

Try it with any number!

$$\text{Circumference} \div \text{diameter} = \pi$$

No matter how big or small a circle is Pi will always be 3.14159...



ARDOCH

REALISING CHILDREN'S POTENTIAL
THROUGH EDUCATION

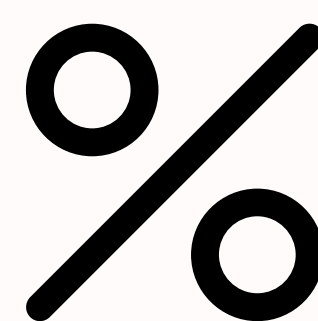


in maths, every problem has a solution!



PERCENTAGES

and decimals



An item is on sale for 20% off . The price was \$80. How do you work out the sale price?

Easy!

Just multiply the price (80) by the percentage (20) and divide by 100.

$$80 \times 20 = 160$$

$$160 \div 100 = 16$$

$$\$80 - \$16 = \$64$$

'cent' is the Latin word for 'hundred'

**A PERCENTAGE IS A
NUMBER BROKEN UP INTO
100 PARTS**

Money uses decimals to show dollars and cents like this:



\$50.55



The decimal point moves by tens. You can work out 10% by moving the decimal point forward one spot.

10% of \$49.99

=

\$4.99

Move the decimal point from here

To here



ARDOCH

REALISING CHILDREN'S POTENTIAL
THROUGH EDUCATION



in maths, every problem has a solution!

SQUARE - CUBE

&

R

O

O

T

N

U

M

B

E

R

S

A number squared is a number
times itself

$$1^2 = 1 \quad (1 \times 1)$$

$$2^2 = 4 \quad (2 \times 2)$$

$$3^2 = 9 \quad (3 \times 3)$$

$$4^2 = 16 \quad (4 \times 4)$$

$$5^2 = 25 \quad (5 \times 5)$$

$$6^2 = 36 \quad (6 \times 6)$$



These are square numbers

A number cubed is a number
times itself and then again

$$1^3 = 1 \quad (1 \times 1 \times 1)$$

$$2^3 = 8 \quad (2 \times 2 \times 2)$$

$$3^3 = 27 \quad (3 \times 3 \times 3)$$

$$4^3 = 64 \quad (4 \times 4 \times 4)$$

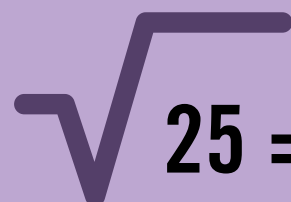
$$5^3 = 125 \quad (5 \times 5 \times 5)$$

$$6^3 = 216 \quad (6 \times 6 \times 6)$$



These are cubed numbers

A square root is a number multiplied by itself to make a
square number, so ...



$$25 = 5$$

The square root of 25 is 5!



This is the
square root
sign



ARDOCH

REALISING CHILDREN'S POTENTIAL
THROUGH EDUCATION